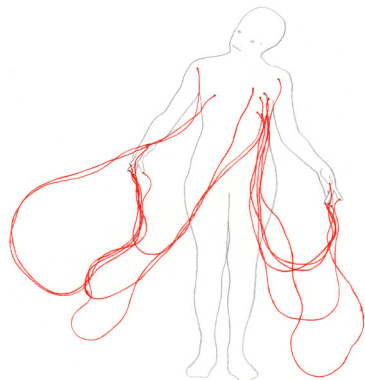


TAMAT Centre de la Tapisserie,
des Arts Muraux et des Arts du Tissu
de la Fédération Wallonie-Bruxelles

Place Reine Astrid, 9
7500 Tournai
Belgium

Tél. : 00.32 (0)69 234 285
info@tamat.be

www.tamat.be
facebook.com/tamattournai



Pauline Cornu - Veines

TAMAT

Centre de la Tapisserie, des Arts Muraux et des Arts du Tissu de la Fédération Wallonie-Bruxelles

Research Departments

Research and help for designers and artists are essential issues at TAMAT.

Eight grants are allocated each year to help artists and designers work on their project with an interest linked to textiles in its widest interpretation.

Various activities can be proposed during the year : meetings with artists and designers, seminars and site visits.

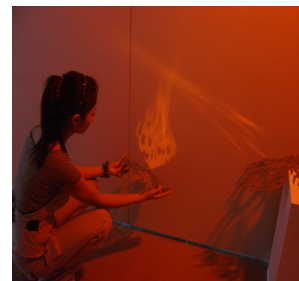
The year culminates in a group show and the publication of a catalogue.

The following artists have been researchers at TAMAT:

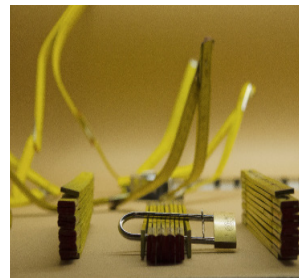
Angel Vergara, Emilio Lopez Menchero, Juan Paparella, Edith Dekyndt, Martine Dolly, Michel François, Ann-Véronica Janssens, Luc Druez, Elodie Antoine, Tony Delcampe, Sylvie Ronflette, etc.



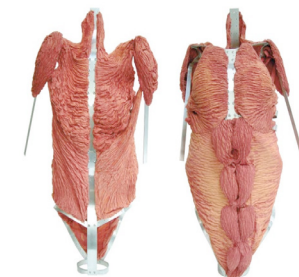
Isabelle Francis - Recherches 07



Jie Chang - Ombre de feu



Frédéric Degand - Recherches 13



Tamara Louis - Recherches 03

Functioning of the departments

There are 3 departments Tapestry / Textiles / Structure, each department is run by an artistic director and a department co-ordinator.

TAPESTRY

Denise Biernaux, Artistic director
Tatiana Bohm, Department co-ordinator
Annick Schotte, Advisor

TEXTILES

Arlette Vermeiren, Artistic director
Anne Germe, Department co-ordinator
Roberta Miss, Advisor

STRUCTURE

Jean-François Diord, Artistic director
Maureen Ginion, Department co-ordinator

This is NOT a residency. Accommodation is not included in the grant. Researchers have to be imperatively present on tuesdays at TAMAT and will be expected to write every 3 months, a report on the evolution of their work .

Discussions with designers, architects, belgian and international artists are scheduled during the year.

Workshops and conferences can also be organized.

How to apply?

A monthly grant is allocated for a period of 12 months: from 1st november 2015 till 31st october 2016.

Applications should be sent in to TAMAT by :

17st may 2015

- by email, PDF format
- AND by post, A4 paper format

Applications should not exceed 10 pages and should include :

- A research project with an interest linked to textiles in its widest interpretation (2 pages).
- Documentation on applicants work.
- A C.V mentioning studies (Tamat is however also open to self-taught applicants).

